



Using EquiPulse PEMF Therapy

by Richard Armentrout, All Thermography Images courtesy of Tracy Turner DVM MS DACVS

My name is Richard Armentrout. I have been a farrier for approx 15 years. I implemented EquiPulse PEMF (Pulsed Electro-Magnetic Field) therapy into my enterprise nearly 3 years ago after receiving a 10 minute session at the International Hoof Care Summit. I experienced 100% pain relief from bulging discs. This therapeutic modality had such a profound effect on my personal health I knew that providing it for my client's horses would be beneficial and change my business model for the better.

ABOUT PEMF

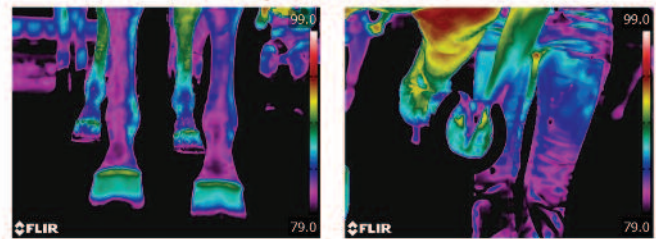
Today, PEMF devices differ from just placing a magnet on the tissue. PEMF systems are composed of loops of copper wire, through which a current of electrical energy is delivered. The current is turned on and off a number of times per second, surging through the loop. The magnetic field expands around the loop, and then collapses, expands and collapses again with each pulse of current. One of the benefits of PEMF versus static magnets is that the fields are typically much larger, so you do not have to place the PEMF loop precisely on the area needing therapy. Given the correct amount of current and the optimum number of loop windings, the loops for a high-powered PEMF device can emit a measurable PEMF field up to 18 inches from the surface of the loop.

GENERAL EQUINE APPLICATION

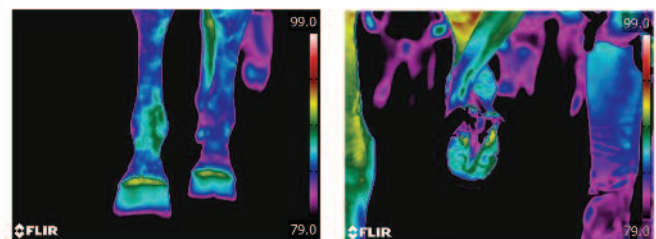
Over the last several years, the equine industry has seen the introduction of High-Powered PEMF systems into race tracks, eventing facilities, stables and barns. Using specially designed delivery loops a technician targets known problem areas like joints and major muscle groups on the horse. For most equine athletes, after short treatments over several days, owners and trainers can generally see and feel an improvement in the way the horse moves. PEMF Therapy provides beneficial outcomes on equine tendon and ligament injury, sore backs, sore stifles, chronic hock soreness, sore shoulders, non-union fractures, laminitis, stone bruises, and non-healing wounds.

Continued on Page 3

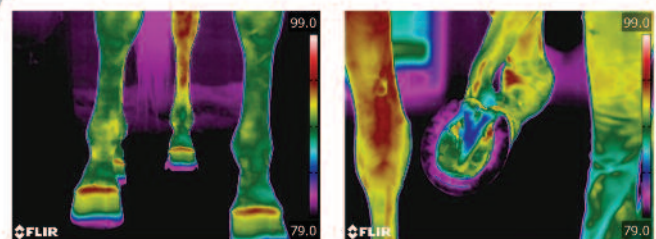
Hoof Pro Before / After
Thermography images and evaluation provided by
Dr. Tracy A. Turner, DVM, MS



Time Zero -both legs have similar temperatures



Immediately after removal of Hoof Pro the temperature of the RF is warmer, the heat encompasses the entire leg indicating that the temperature change is due an increase in circulation



1 hour later both legs are warmer due to the legs warming in general but the RF remains significantly warmer than the LF. Indicates a sustained increase in circulation for the RF

AAPF/IAPF Membership Benefit

FARRIER ASSISTANCE PROGRAM



Tom Willoughby CF APF of Crown Point, Ind., has agreed to serve as the chairman of our 2019 AAPF/IAPF Farrier Assistance Fund Online Auction, which will be held at the International Hoof-Care Summit.

"I want to challenge all AAPF/IAPF members to consider either donating or purchasing an item - regardless of size - to benefit our 2019 Online Auction. From personal experience, you never know when you'll need the services and/or funds available through the AAPF/IAPF Farrier Assistance Fund."

**To donate an item and view
donated items, please visit:**

**[www.ProfessionalFarriers.com/
OnlineAuction](http://www.ProfessionalFarriers.com/OnlineAuction)**



For additional information please contact:

American & International
Associations of Professional Farriers
PO Box 223661,
West Palm Beach, FL 33422
Phone: **859-533-1465**

E-mail: **AAPF@ProfessionalFarriers.com**
Web: **www.ProfessionalFarriers.com**

calendar of events

OCTOBER

- 2** Oakhurst Equine Farrier Forum, Newberg, OR. Clinicians: Sylvia Ouellette DVM & Jack Root DVM (3 CE)
Contact: Sylvia Ouellette DVM, 503-554-0227
- 5-6** Expanding Farrier Knowledge Clinic, Minco, OK. Clinician: Katie Panos BS CF (12 CE)
Contact: Katie Panos BS CF, 603-660-8126
- 5-7** World Championship Blacksmiths Competition, Doswell, VA. Clinician/Judge: Brian Nelson CJF (24 CE)
Contact: Craig Trnka CJF APF, 505-235-5952
- 6** AAPF/IAPF Hoofcare Essentials Clinic at Stockhoff's, Freehold, NJ. Clinicians: Steve Kraus CJF APF and Bob Smith CF APF-I (7 CE)
Contact: Molly & Jed Pappas, 800-421-1002
- 6** AFA Osphos Free Clinic, North Grafton, MA. Clinician: Diego Almeida CJF EE (7 CE)
Contact: Donnie Perkinson CJF DipWCF, 314-288-9168
- 7-8** Pete Ramey Hoof Rehabilitation Clinic, Greenville, CA. Clinician: Pete Ramey (20 CE)
Contact: Kathryn Ramey, 706-968-9878
- 10-13** ELPO Category 4 Lameness Treatment Course, Penrose, CO. (25.5 CE)
Contact: Cody Ovnicek, 717-372-7463
- 12-13** Oregon Farriers Association Fall Clinic, Bend, OR. Clinicians: Jason Smith CJF APF-I & Wendy Krebs DVM
Contact: Scott Smith CJF, 541-233-9477
- 12-14** Western Canadian Farriers Conference, Chilliwack, BC. Clinician/Judge: Wayne Preece FWCF; Clinicians: Andrew Tuefel RMT & Steve Dixon CJF (9 CE)
Contact: Rick Higginson, 604-858-6715
- 13** AAPF/IAPF Hoofcare Essentials Clinic at Centaur Forge, Burlington, WI. Clinician: Jeff Pauley CJF AWCF (7 CE)
Contact: Bekki Baas, 262-763-9175
- 13-14** Maine Farriers Association Fall Clinic, Old Town, ME. Clinician: Doug Workman CJF APF (7 CE)
Contact: Susan Walker APF-I, 207-577-1345
- 18-19** Annual Veterinarian and Farrier Conference, Rochester, NH. Clinicians: Steve Kraus CJF APF, Grant Myhre DVM, and Allie Hayes CF APF (15.25 CE)
Contact: Melanie Shepard, 603-335-4777
- 20** Sweet River Equine Clinic, Modesto, CA. Clinician: Scott Lampert APF (8 CE)
Contact: Dan Sweet DVM, 209-524-9191
- 20-21** Tool Modification Clinic at Meader Supply, Rochester, NH. Clinician: Nick Denson (12 CE)
Contact: Christine Meader, 603-332-3032
- 24-27** ELPO Category 1 Certification Course, Penrose, CO. (24 CE)
Contact: Cody Ovnicek, 717-372-7463
- 25-28** Pacific Hoof Care Practitioners Conference, Reno, NV. Clinicians: Pete Ramey, Dr. Cindi Nielsen, Christina Cline, Mary DeBono, Jaini Clougher BVSc Bsc (15.5 CE)
Contact: Jon Smedley, 401-580-0811

NOVEMBER

- 1** Indiana Farriers Association Fall Clinic, Sheridan, IN. Clinician: Bob Marshall (6.5 CE)
Contact: Dion O'Brien 765-427-6154
- 3-4** A Workshop for Veterinarians and Farriers, East Lansing, MI. Clinicians: Wayne Preece FWCF, Betsy Carr DVM, Mark Kinsley DVM, Jane Manfredi DVM (16 CE)
Contact: Carla McLachlan, 517-432-5402
- 6** Oakhurst Equine Farrier Forum, Newberg, OR. Clinicians: Sylvia Ouellette DVM & Jack Root DVM (3 CE)
Contact: Sylvia Ouellette DVM, 503-554-0227
- 9-10** The Horseshoe Barn Annual Clinic, Sacramento, CA. Clinician: Adam Wynbrandt APF-I, 916-925-6534
- 9-10** First Annual Danny Ward Memorial Clinic, Blacksburg, VA. Clinicians: Dusty Franklin CJF DipWCF ASF APF and Joey Hite CJF Contact: North Carolina Horseshoers Association
- 24-25** Pete Ramey Hoof Rehabilitation Clinic, Bryon Bay, Australia. Clinician: Pete Ramey (20 CE)
Contact: Kathryn Ramey, 706-968-9878

DECEMBER

- 1-5** AAEP 64th Annual Convention, San Francisco, CA
Contact: AAEP, 859-233-0147
- 4** Oakhurst Equine Farrier Forum, Newberg, OR. Clinicians: Sylvia Ouellette DVM & Jack Root DVM (3 CE)
Contact: Sylvia Ouellette DVM, 503-554-0227
- 6-9** World Championship Blacksmiths Competition, Las Vegas, NV. Clinicians/Judges: Sarah Beane FWCF & Steven Beane FWCF (24 CE)
Contact: Craig Trnka CJF APF, 505-235-5952
- 14-15** Mid-Eastern Farriers Association Clinic & Contest, Westerville, OH. Clinicians: Bodie Trnka CJF & Ben Hupp CJF
Contact: Mike Augenstein CJF, 740-525-0529

Continued from page 1

The question arises "Can humans be successfully treated with this same device?" Yes, they can. It is not unusual to find owners of High-Powered PEMF devices treating themselves, family members and friends. Today, almost everyone has heard of using PEMF therapy.

TREATMENT OBJECTIVES

Treatment goals are to restore normal motion and neurological firing patterns to the affected spinal joints, release adjacent tight and unbalanced muscles, break up scar tissue and adhesions, disperse lactic acid and other metabolic waste products. High-Powered PEMF technology is used to facilitate rapid removal of waste products from the treated tissues and draw in new blood flow, nutrients and oxygen. The PEMF also enhances circulation of synovial fluid through joint capsules that have been mobilized.

EquiPulse PEMF Therapy is a proven modality that helps improve chronic inflammatory conditions and helps the body heal faster, without drugs.

WHAT IS A TYPICAL TREATMENT PROTOCOL?

Treatments typically last 30 minutes, and are not stressful; rather they are calming and relaxing.

When placed on a horse, the horse visibly and sensitively reacts to the large magnetic field charge. The technician holds the loop on or over area of the body of the horse. The PEMF delivery loops are brought closer until they are in contact with the horse. Intensity is increased or decreased generally based upon the comfort level and response of the horse. The loops may be placed in a position of straddling the lower cervical muscles on one side of the neck.

After approximately one minute, the loops are switched to the other side of the horse's neck.

This continues for 8-10 minutes, then a large loop is used for the middle and lower back, hips, and gluteal regions. The intensity is set to where the back muscles visibly pulsate when the loop is about 1-2 cm above the surface. The loop can also be moved closer or further away during treatment to vary the intensity. About 1-2 minutes can be spent over the lumbar region, then move up to the saddle region for 1-2 minutes varying the position slowly from upper to lower thoracic.

Then the loop is moved back to the lumbar and hip region where it is moved over the gluteal muscles first on one side, then the other.

Continued on page 5

FREE ATTENDANCE TO 2019 International Hoof Care Summit, plus 50% of your lodging. Contact us to learn how!

Easy to use, easy to fit, the Hoof Pro delivers rapid relief, increases in blood flow and accelerates healing from conditions such as abscesses, bruising, navicular conditions, laminitis, and thrush.

"Designed for Farriers and Equine Podiatry, the Hoof Pro System is a true game changer. This phenomenal therapy will significantly contribute to an equine's competitive performance and their long-term welfare. The Hoof Pro also delivers higher earnings with a minimal amount of additional time or effort and no recurring expendable."

Interested? Call (330) 936-9473 or go to:

www.Hoof.Pro

Now used by
Equine
Veterinarians
Nationwide



Richard Armentrout APF-I, CJF I
Holistic Equine Services





Farrier Disability Insurance

Disability insurance from Assurity can help replace your stream of income and provide financial security should an accident or illness befall you.

Protect your most valuable asset!

What are you willing to risk?

What is at risk if a sickness or accident prevented you from working and earning an income? Your family's lifestyle? Your children's education? Your home? Your retirement account? Your business?



What is your most valuable asset?

It's not your car, house, or family heirlooms. It's your earning potential. If you are like most Americans, your entire lifestyle depends upon your ability to earn a paycheck each month. Unfortunately, an accident or serious illness can rob you of your ability to work, your income and your financial stability. Then what?

- ◆ On & off the job coverage
- ◆ Works perfectly with the Farrier Assistance Program

Contact Ryan to learn more:
ryan@ialtc.com (800) 471-7191



Details at: www.ialtc.com/groups/AAPF

Continued from page 3

1-2 minutes spent over each region should amount to about 10 minutes total for areas covered with the large loop. 2-4 treatments are recommended (all therapies combined with PEMF) spaced over 1-2 weeks depending on the case, gradually increasing time between treatments until the horse reaches a point of maximum improvement.

Regular weekly treatments are recommended for competitive horses.

BASIC SCIENTIFIC STUDIES ON PEMF

Thousands of university level case studies exist about the use of PEMF on hundreds of indications, from arthritis to edema to neuropathy on humans. High-Powered PEMF devices were developed under the theory that if a weak PEMF field has benefit, then a very large PEMF field will generally yield a faster and much better result.

REAL WORLD APPLICATIONS

As a Farrier, I can apply shoes to provide mechanical support, protection, and corrective applications and as a PEMF technician I can also provide a therapeutic modality to increase healing.

The radiographs to the right (top) are of a founder case that was left untreated for 2 years before intervention. This resulted in bone loss resulting in a chronic type II diagnosis. With correct shoeing and weekly Hoof Pro PEMF sessions there was a significant increase in sole depth.

The photo to the right (middle) shows a horse with a known knee issue that was experiencing some joint mobility issues. The horse also showed signs of a hoof abscess.

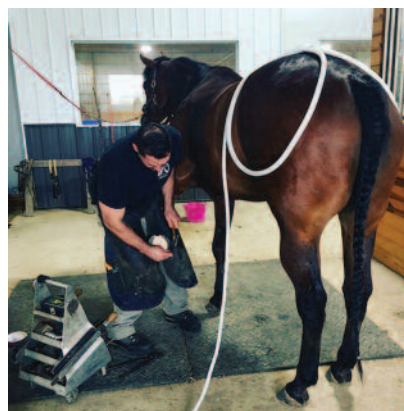
Having PEMF available as an option, and vet recommended, the Hoof Pro provided a solution to help resolve the abscess more quickly and make the horse more comfortable for shoeing.



Above: horse with chronic type 2 founder.



Above: horse with knee issue.



Above: horse with SI issues.

The photo to the left (bottom) shows a horse with SI and hip discomfort. The ability to provide an EquiPulse PEMF session to increase the horse's comfort level makes a Farrier's job so much easier. Farriers can improve cases with: navicular, laminitis, abscesses, hoof avulsions, joint pain, tendon issues and general muscle soreness! Happy horse, happy owner and happy Farrier.

FAST FORWARD - MY PROFESSIONAL EXPERIENCE

For the past three years I have been utilizing PEMF therapy in my Farrier practice. Providing EquiPulse PEMF sessions has completely transformed the way I do business, and know it will help my fellow farriers do the same. I have had the pleasure of helping horses improve from navicular issues, laminitis, abscesses, tendon tears, hock and stifle issues and general muscle soreness. Learning early on in my career, horses that are difficult to work on generally are not behavioral issues but most commonly a response to pain.

Being sensitive to these queues and having the EquiPulse PEMF modality available has not only improved my client's horses well being but has made my job so much easier.

FINALLY

More and more horse owners are hearing about the amazing results of this therapeutic modality and are asking specifically for it. More vets are recommending it and even utilizing it on their clinics. There is definitely a paradigm shift in the equine world moving more to natural and holistic alternatives to traditional medicine. It's a great time to reconsider your business model by including this non-invasive healing modality to your toolbox and to your enterprise's success!

NOTES FROM AAPF/IAPF OFFICE

1. **Nominating Committee Chairman Steve Prescott CJF APF-I has announced that pursuant to the bylaws, the Nominating Committee has presented the following slate to fill the two Director positions on the Board for the term of January 1, 2019 through December 31, 2021:**

- a. Michele MacRae CF APF-I of Fergus, Ontario
- b. Lester Yoder APF-I of Shreve, Ohio

Self-Nominations may also be made by visiting this link on the AAPF website:
www.professionalfarriers.com/BoardNominations

The deadline for submitting a completed application is November 1, 2018. For additional details about nominations, please contact Steve Prescott CJF APF-I at 843-247-3377 or steveprescott12@gmail.com



Michele MacRae
CF APF-I



Lester Yoder APF-I

2. **The Roy Bloom Scholarship is now accepting applications to attend the 2019 International Hoof-Care Summit. The application deadline is October 1, 2018. Requirements for this scholarship include:**

- a. Be a current member of the AAPF/IAPF
- b. Have never attended the International Hoof-Care Summit in Cincinnati, Ohio
- c. Must be willing and able to attend the AAPF/IAPF Annual Meeting held during the Hoof-Care Summit
- d. Applicants may have previously applied but not earned the scholarship
- e. Submit an online application – www.professionalfarriers.com/BloomScholarship

The association will again divide the scholarship into two categories:

1. Farriers having less than 5 years of experience
2. Farriers having 5 or more years of experience



Roy Bloom
Scholarship
Trophy

3. **The Frank Gravlee Scholarship is also accepting applications to attend the 2019 International Hoof-Care Summit. The application deadline is October 1, 2018. Two veterinary students or recent graduates will earn this scholarship for 2019. Requirements for this scholarship include:**

- a. Be a current student at a North American veterinarian college or university OR a graduate of a North American veterinarian college or university within the past two years (since July 1, 2016).
- b. Have never attended the International Hoof-Care Summit in Cincinnati, Ohio
- c. Must be willing and able to attend the AAPF/IAPF Annual Meeting held during the Hoof-Care Summit
- d. Applicants may have previously applied but not earned the scholarship
- e. Submit an online application – www.professionalfarriers.com/GravleeScholarship



Roy Bloom CJF APF-I



Frank Reilly DVM APF

THE AAPF/IAPF BOARD OF DIRECTORS EXTENDS ITS APPRECIATION TO FRANK REILLY DVM APF OF WEST CHESTER, PENNSYLVANIA FOR HIS GENEROUS FINANCIAL SUPPORT FOR BOTH THE ROY BLOOM AND FRANK GRAVLEE SCHOLARSHIPS.

AAPF/IAPF Extends Appreciation to our Educational Partners

WOULD YOU LIKE TO BECOME AN EDUCATIONAL SPONSOR? CALL THE AAPF/IAPF OFFICE FOR DETAILS AT (859) 533-1465.



Thank You for Supporting Our Educational Initiatives:
Laminitis 911 and Thrush 911 Posters • AAPF/IAPF Hoofcare Essentials™ Clinics

STEEL STAMPS, INC.



CUSTOM STAMPS FOR KNIFE MAKERS, BLACKSMITHS & FARRIERS

Steel Stamps, Inc. (aka Harper Mfg) has served the industry for over 30 years. Cold-Stamping, Hot-Stamping, or stamping with a Press, Steel Stamps, Inc. has your solution. Direct from our family-owned shop in Boise, ID, Steel Stamps, Inc. delivers Quality and Value.



1846 W. AIRPORT WAY
BOISE, ID 83705
PHONE **208-345-2550**
FAX **208-345-2369**
Email steelstampsinc@yahoo.com

www.steelstampsinc.com

FEI WORLD EQUESTRIAN GAMES TRYON 2018

The AAPF/IAPF was pleased to have been selected as the "Official Farriers for the FEI World Equestrian Games Tryon 2018". We were able to provide over 40 farriers from throughout the USA, Canada, Mexico, Switzerland, and Taiwan. A full report will be included in our next newsletter. In the meantime, we want to express our thanks to:

- | | | |
|--|--|--|
| <i>James Gilchrist APF-I
Co-Chairman</i> | <i>Todd Danielson CF APF</i> | <i>Steve Muir CJF APF-I</i> |
| <i>Dave Farley CF APF-I
Co-Chairman</i> | <i>Joao Frietas APF</i> | <i>Jarod Nooren APF-I</i> |
| <i>Richard Armentrout
CJF I APF-I</i> | <i>Chuy Garcia APF</i> | <i>Jeff Pauley
CJF AWCF APF</i> |
| <i>Mike Bagley CJF II APF-I</i> | <i>Tiffany Gardner CF APF-I</i> | <i>Billy Pope CF APF</i> |
| <i>Adam Barnard</i> | <i>Sean Gaul CF APF</i> | <i>Steve Prescott CJF APF-I</i> |
| <i>Jay Bell CJF RJF CLS APF</i> | <i>Enrique Gomez Su
CJF II APF</i> | <i>Mark Rikard CF APF</i> |
| <i>Michaela Bell</i> | <i>Mike Isles APF-I</i> | <i>Dwight Sanders APF</i> |
| <i>Alan Berardo CF APF</i> | <i>John Jackson APF</i> | <i>Robbie Shuler APF</i> |
| <i>Bjorn Berg CJF APF</i> | <i>Sandy Johnson APF</i> | <i>Paul Skaggs MS CJF APF</i> |
| <i>Caleb Bergeleen CF APF-I</i> | <i>Sheng-Yen Kuo CF APF</i> | <i>Jason Smith CJF APF-I</i> |
| <i>Daisy Bicking APF-I</i> | <i>Clint Loomis APF-I</i> | <i>Tom Stallings APF</i> |
| <i>Rachel Braverman</i> | <i>Logan Lovett CJF APF-I</i> | <i>Mike Stine
CJF II RJF APF-I</i> |
| <i>Esco Buff PhD APF CF</i> | <i>Chris Martelli APF</i> | <i>Shearer Wludyka
CJF ASF APF</i> |
| <i>Curtis Burns APF-I</i> | <i>Tom McCarthy CJF I APF</i> | |
| <i>Eugene Church APF</i> | <i>Jack Montgomery Sr APF</i> | |
| | <i>Jack Montgomery III APF</i> | |

WHAT'S INSIDE

Using EquiPulse PEMF 1, 3, 5

Calendar of Events 2

Notes from AAPF/IAPF Office 6

Educational Partners 7

FEI World Equestrian Games 8

professionalfarriers.com

West Palm Beach, FL 33422

P.O. Box 223661

